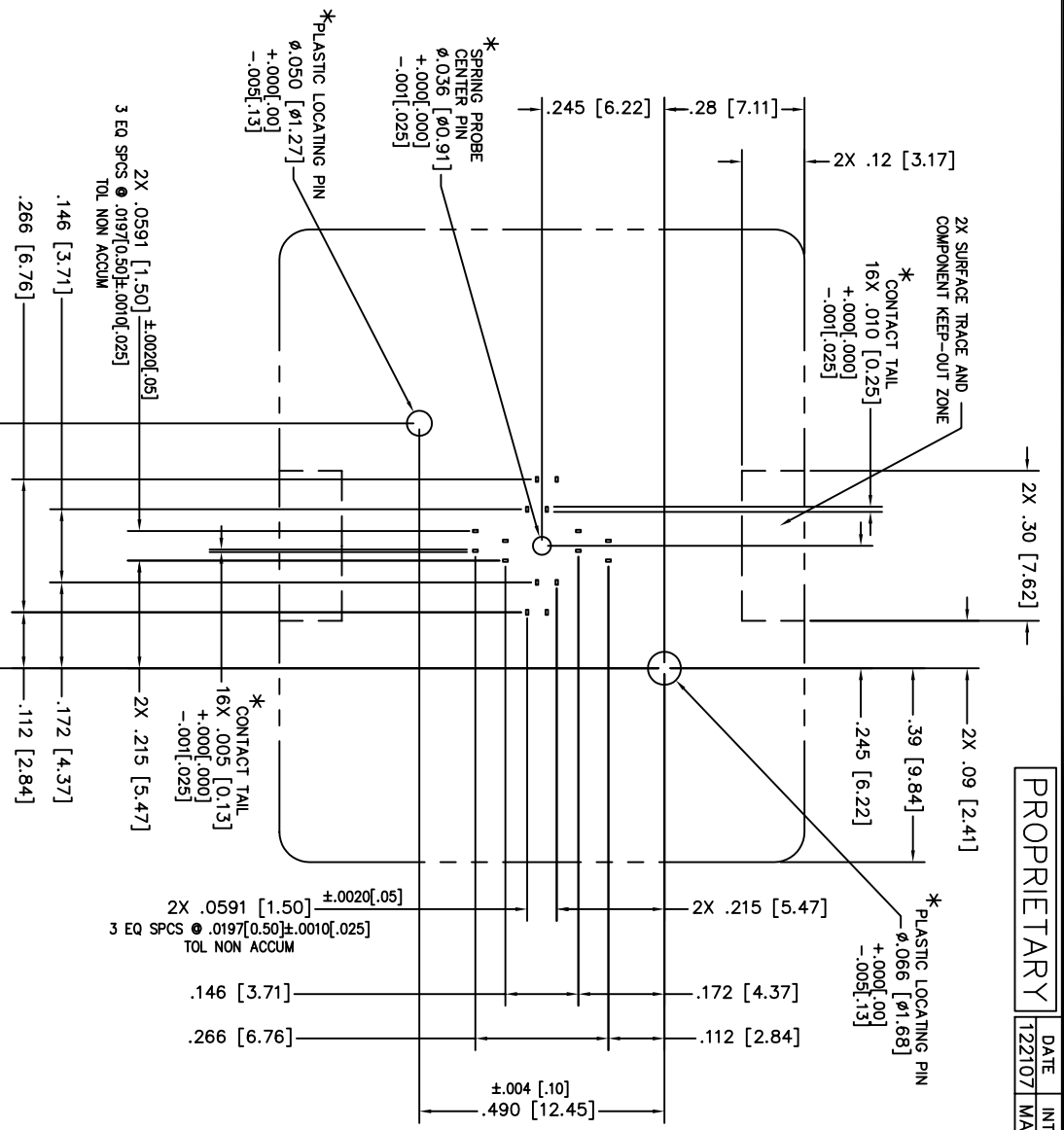
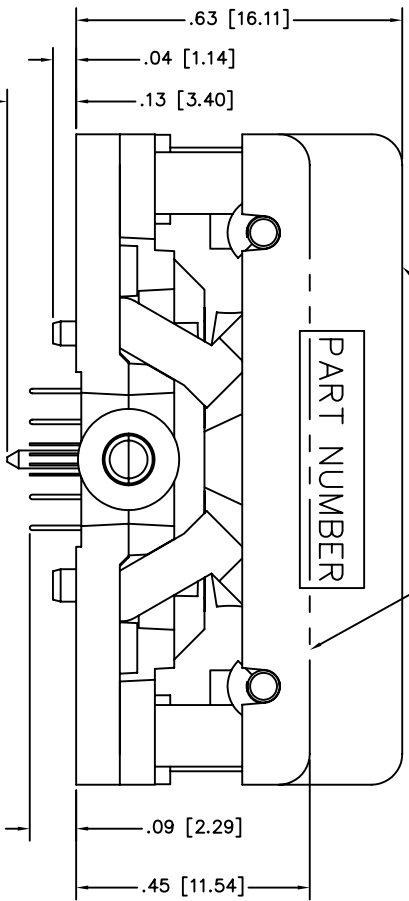
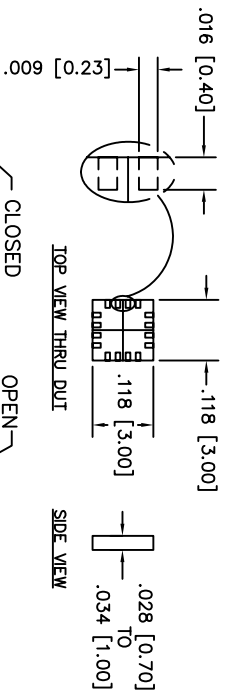
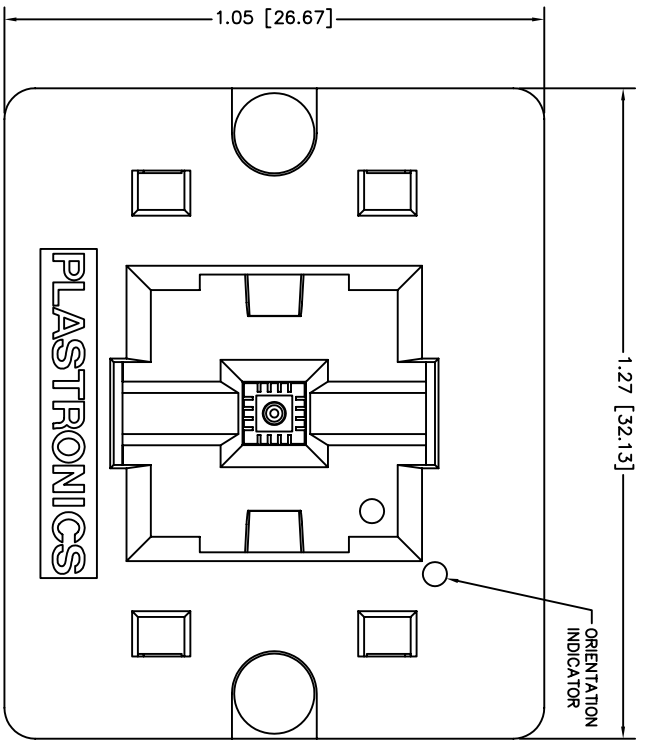


NOTE : \* DIMENSION OF SOCKET FEATURES SHOWN.  
 BOARD DESIGNER SHOULD SELECT APPROPRIATE HOLE  
 SIZES TO PROVIDE A SLIP FIT FOR THESE FEATURES.



THIS DRAWING IS SUBJECT TO CHANGE WITHOUT  
 NOTICE. PLEASE REQUEST A CURRENT DRAWING  
 WHEN LAYING OUT BOARDS.

FEATURES—S  
 = OFFSET CONTACT  
 = SPRING PROBE  
 = CENTER PIN

SOCKET PART NUMBER  
**16LQ50S23030**

UNLESS OTHERWISE SPECIFIED		MATERIAL	PROCESSES	SIZE	DWG NO.	REV	SH
XXX	±.003	FINISH	—	C	16LQ50S23030	—	—
XX	±.010	—	—				
ANG	±.01	—	—				
ALL DIM ARE IN INCHES							
RESUME EDGE DIMENSIONS AND							
DIM LIMITS APPLY BEFORE							
DOWEL PINS TOLERANCES							
FILE	THRU	±.004	—				
1.28	THRU .250	±.005	—				
.251	THRU .500	±.006	—				
.751	THRU 1.500	±.010	—				
1.501	THRU 2.000	±.012	—				
TITLE		SCALE	DATE				
OPENTOP DUAL LATCH OFN SOCKET;		NONE	12/21/07				
3 X 3mm, 0.50mm-PITCH;							
16 CONTACTS PLUS SPRING PROBE							
CENTER PIN; THRU-HOLE							

PROPRIETARY

DATE	INT
12/21/07	MAA

